



Complete solution for Oil and Gas Industry

www.max-energy.biz



About Us

- ❖ We, Max Energy with a bright history and many successful projects carried out are proud to serve the market as a solution provider for Oil and Gas industry.

As a regional leading solution provider for Oil & Gas well service & equipment , Max Energy is dedicated to providing superior oil & gas well services and equipment to our customers.

Our mission is to deliver the highest standard of integrated services to the Iranian and international market.

We are committed to providing innovative solutions that meet all regulatory standards. Our solutions are backed by wide industry knowledge and expertise accumulated over years of servicing the industry.



❖ **Vision**

To be the preferred partners with our Clients/ Package Vendors, delivering challenging Projects and achieving highest level of satisfaction for our Clients & Other EPC Stake Owners.

❖ **Mission**

To deliver Quality Engineering & Project Management Services to the Oil & Gas, Power & Water Treatment Industries, in a manner that is reliable, sustainable, competitive, flexible & customized to the project needs promoting business relationship on mutually beneficial basis.



UPSTREAM SERVICES

Wire line Services

Open hole Wire line Services

- Gamma-Ray Logging (GR)
- Natural Gamma Ray Spectral Logging (NGR)
- Spontaneous Potential Logging (SP)
- Caliper Logging
- Imaging Logging
- Nuclear Magnetic Resonance Logging(NMR)
- Lithology Density Tool (LDT)
- Full Wave Acoustic Tool Logging
- Resistivity Logging



Cased hole Wire line Logging Services

- Production Logging flow meter
- CBL- Cement Bond Logging
- Gamma Ray Spectrometry logging (GRT)
- Casing Collar Locator (CCL)
- Gamma Ray Logging (GRT)
- Pipeline Repair

MWD & LWD Services

- ❖ **Measurement While Drilling MWD Sampling**
 - Open hole formation fluid identification
 - Cased-hole Formation Hydraulic
- ❖ **Permanent monitoring**
- ❖ **Wellhead Services**



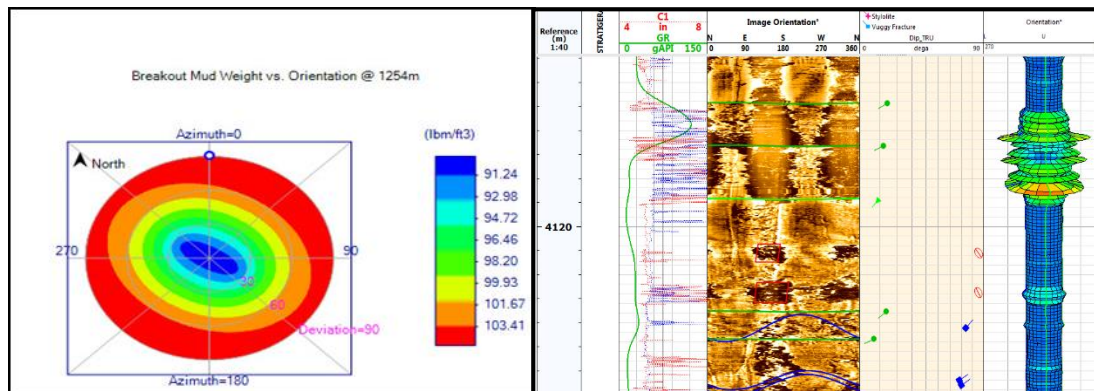
❖ **Slick line Services**

- Bottom-hole pressure and temperature and flow surveys
- Running & pulling down hole safety valves, plugs, circulating & other down hole devices
- Shifting sliding sleeves
- Locating tubing ends, bottom of hole and obstructions
- Sand-bailing & related work
- Checking the inside of the tubing for debris, waxes, scale, corrosion, etc.
- Bottom-hole sampling
- Tubing caliper surveys
- Running temperature and pressure surveys
- Gas lifting operations
- Fishing operations
- Running & pulling packers and other related completion tools
- Maintenance & repair services for wellhead equipment



Integrated Field Study

- ❖ **1D and 3D Geo-mechanic Study :**
 - wellbore stability Analysis and Drilling Optimization,
 - Investigation of wellbore integrity over life of field,
 - Determination of fault stability and mechanical seal integrity,
 - Analysis of risk of fault re-activation,
 - Fault and Fracture Stability
- ❖ **Well bore instability analysis by full-set data**
- ❖ **Well bore instability analysis by special log data**



❖ MDP Main Activities :

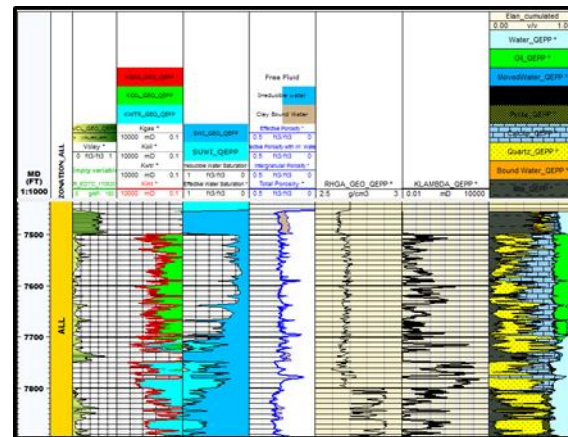
- Geology & Geophysics
- Integrated Petro-physical Analysis
- Stratigraphy Analysis
- Geo-modelling (3D Static Modelling)
- Reservoir Dynamic Modelling
- Geo-mechanic Modelling
- Production Engineering
- Surface Engineering
- Drilling Engineering
- Project Cost Evaluation



❖ Petro-physical Evaluation work flow

The main objective of the petro-physical study is to identify the relevant petro-physical properties and reservoir characteristics variations including effective porosity, water saturation, Permeability and lithology on the reservoir formations.

- Getting data from client
- Data Base Building
- QC of core log data
- Depth Shifting
- Log Editing
- Pre-Calculation
- Different Environmental Correction
- Clay and Mineral Identification
- Parameter Picking
- Key Well Determination
- Uncertainty Determination
- Data processing
- Log interpretation
- Porosity, Water Saturation and Permeability Determination
- Pay Summation
- Fluid Contact Determination
- NTG determination



PROCUREMENT

❖ Upstream

- Drilling Equipment
- Oil Country Tubular Goods (OCTG)
- Waste Management Systems
- Completion Tools
- Logging Tools
- Drilling Fluids and Cementing additives
- Well Head and Pressure Control Equipment



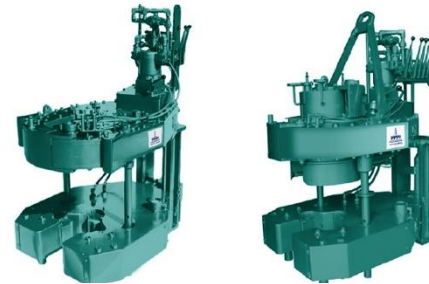
❖ Downstream

- Rotary & Fixed Equipment
- Pipes, tubes & Fitting
- Instrument
- Valves



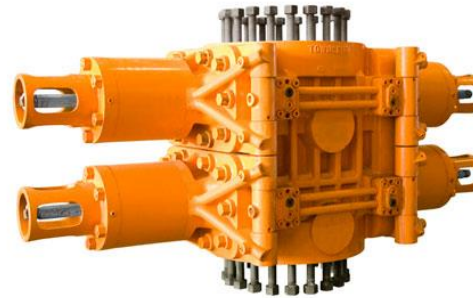
❖ Rig and components

- Top drive
- Draw works, Rotary table
- Air and power tong



❖ BOP

- Single and double BOP
- Different required rams
- Annular BOP



❖ **Rig pump**

- Mud pump
- charging pump



❖ **Solid control equipment**

- Mud cleaner
- Degasser, shale shaker



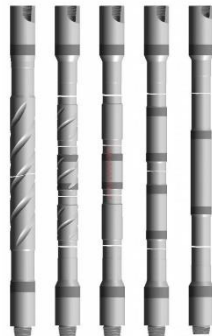
❖ **Smart Waste management system**

High & low speed centrifuge



❖ Drilling string

- Drill pipe, stabilizer, roller reamer, scrapper, bit sub, jar,
- drill collar & heavy weight drill pipes



❖ Drilling bits

- Rock bit, Button Bit, PDC bit
- Center cut
- Core head



❖ Casing

- Different size of casing, LDC, Casing Shoe,
- casing centralizer, Top & Bottom plug & casing hanger



❖ Well head & choke manifold

- Casing head housing, tubing head spool
- Solid Block, Surface Safety Valve
- companion flange, pressure gauge



❖ Tubing and completion tools

- Different size of tubing,
- SSD (sliding sleeve door),
- hydraulic and mechanical packer,
- mule shoe, perforated screens,
- top & bottom no go landing nipple,
- mill out extension,
- anchor seal, expansion joint,
- sssv & its landing nipple, long flow coupling,
- tubing hanger,
- liner hanger and requirements
- pup joint, SPM (side pocket Mandrel)
- gas lifting Valve & all completion requirements.



❖ Logging Tools

- Logging Units
- All kinds of cables and wires
- Production Logging Flow meter
- Casing Collar Locator
- Multi Array Sonic
- Compensated Neutron Log
- Lithology Density Tool
- Quartz and Strain PT gauge
- Flow Through Sampler
- KPG/KTG Mechanical gauge



❖ Drilling Fluids and Cementing additives

- Weight Materials
- Dispersants & deflocculates
- Fluid loss Control additives
- Corrosion Inhibitors
- Defoamer
- Mud Lubricants , Surfactants & Spotting Fluids
- Emulsifiers
- Viscosifiers
- Lost Circulation Materials
- Cementing Chemical
- Production & Treatment Chemical



❖ **Cementing unit**



❖ **Coiled tubing unit**



❖ **Acidizing unit**



❖ **Nitrogen unit**



Down Stream

❖ Valves and valve automation

- Ball valve
- Gate valve
- Globe valve
- Butterfly valve
- Choke valve
- Check valve
- Plug valve
- ESD Valve



❖ Pump

- Positive displacement pumps
- Centrifugal pumps



❖ Compressor

- Reciprocating
- Rotary screw
- Rotary sliding
- Centrifugal
- CNG station



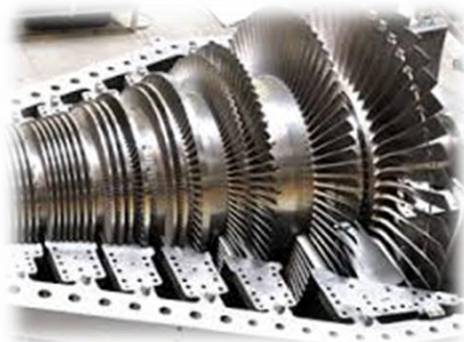
❖ Pipe, tube and fittings

- Pipe line & heat exchanger tube in variety of size and raw material



▶ Turbine

- Gas turbines
- Steam turbines



❖ Instrument

- Control panel, pressure switch, regulator
- solenoid valve, pressure and temperature gauge
- Accumulator, needle valve



P.O Box : 14155-4618, Tehran, Iran

+98-21-8899 47 93-5

info@max-energy.biz



www.max-energy.biz